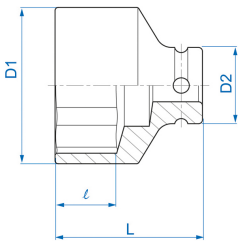



# 4535S

## **S** 1/2" 6-Kant Kraft-Steckschlüssel, Zoll

ANSI / ASME B107.2

- Zoll
- Chrom-Molybdän
- Phosphatiert



	Abmessung (Zoll)	D1 (mm)	D2 (mm)	L (mm)	l (mm)	Gewicht (g)
453510S	5/16"	14	25	38	7	67
453512S	3/8"	17	25	38	7	70
453514S	7/16"	18	25	38	8	71
453516S	1/2"	20	25	38	10	72
453518S	9/16"	22	25	38	10	77
453520S	5/8"	24	25	38	11	112
453522S	11/16"	26	30	38	12	115
453524S	3/4"	28	30	38	13	120
453526S	13/16"	30	30	40	14	125
453528S	7/8"	32	30	40	14	143
453530S	15/16"	34	30	42	15	152
453532S	1"	36	30	42	15	168
453534S	1-1/16"	38	30	44	16	176



**KING TONY**

*Enjoy your work*

453536S	1-1/8"	41	30	44	17	194
453538S	1-3/16"	42	30	44	17	201
453540S	1-1/4"	44	30	44	18	205