

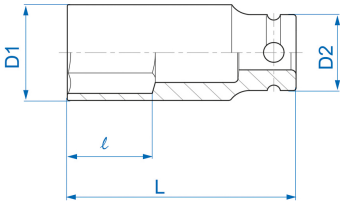
4935S




S 1/2" 6-Kant Kraft-Steckschlüssel, Zoll, dünnwandig

ANSI / ASME B107.2

- Zoll
- Chrom-Molybdän
- Phosphatiert



	Abmessung (Zoll)	D1 (mm)	D2 (mm)	L (mm)	l (mm)	Gewicht (g)
493514S	7/16"	16.7	25	80	20	148
493516S	1/2"	19	25	80	20	159
493518S	9/16"	20.5	25	80	20	165
493520S	5/8"	23	25	80	20	170
493522S	11/16"	24.5	30	80	23	235
493524S	3/4"	27	30	80	23	255
493526S	13/16"	29	30	80	25	292
493528S	7/8"	30.5	30	80	25	308
493530S	15/16"	33	30	80	26	336
493532S	1"	34	30	80	26	356
493534S	1-1/16"	37	30	80	27	405
493538S	1-3/16"	40.5	30	80	27	417
493510S	5/16"	13	25	80	20	129



KING TONY

Enjoy your work

493512S	3/8"	16	25	80	20	144
493536S	1-1/8"	39	30	80	27	355
493540S	1-1/4"	42.5	30	80	27	389