

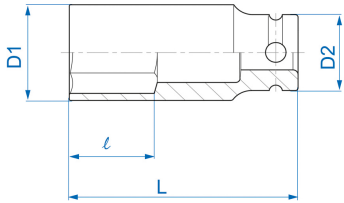
4430S




S 1/2" 12-Kant Kraft-Steckschlüssel, Zoll

ANSI/ASME B107.2

- Zoll
- 12-Kant
- Chrom-Molybdän
- Phosphatiert



	Abmessung (Zoll)	D1 (mm)	D2 (mm)	L (mm)	l (mm)	Gewicht (g)
443020S	5/8"	24	25	80	16	233
443024S	3/4"	28	30	80	16	250
443028S	7/8"	32	30	80	16	294
443030S	15/16"	34	30	80	16	308
443032S	1"	36	30	80	16	341
443034S	1-1/16"	38	30	80	16	358
443036S	1-1/8"	41	30	80	16	401
443040S	1-1/4"	46	30	80	16	504
443042S	1-5/16"	46	30	80	16	476
443048S	1-1/2"	50	30	80	34	564