

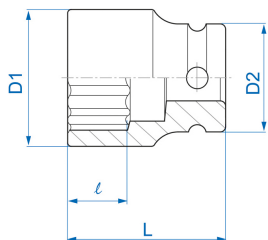
## 4530S




### **S** 1/2" 12-Kant Kraft-Steckschlüssel, Zoll

ANSI/ASME B107.2

- Zoll
- 12-Kant
- Chrom-Molybdän
- Phosphatiert



	Abmessung (Zoll)	D1 (mm)	D2 (mm)	L (mm)	l (mm)	Gewicht (g)
453016S	1/2"	20	25	38	10	71
453018S	9/16"	22	25	38	10	71
453020S	5/8"	24	25	38	11	111
453022S	11/16"	26	30	38	12	116
453024S	3/4"	28	30	38	13	119
453026S	13/16"	30	30	40	14	125
453028S	7/8"	32	30	40	14	141
453030S	15/16"	34	30	42	15	152
453032S	1"	36	30	42	15	168
453034S	1-1/16"	38	30	44	16	176
453036S	1-1/8"	41	30	44	17	194
453038S	1-3/16"	42	30.5	44	17	209