

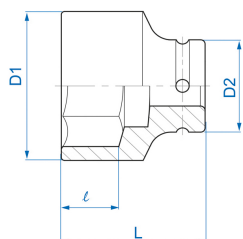
6535S



S

3/4" 6-Kant Kraft-Steckschlüsseleinsatz, Zoll

ANSI / ASME B107.2

- Zoll
- Chrom-Molybdän
- Phosphatiert



	Abmessung (Zoll)	D1 (mm)	D2 (mm)	L (mm)	l (mm)	Gewicht (g)
653522S	11/16"	29	38	50	10	225
653524S	3/4"	32	38	50	10	238
653526S	13/16"	35	38	50	13	252
653528S	7/8"	36	38	50	13	257
653530S	15/16"	37	38	50	15	288
653532S	1"	38	38	53	15	320
653534S	1-1/16"	42	40	53	18	325
653536S	1-1/8"	45	40	53	18	355
653538S	1-3/16"	46	40	53	20	365
653540S	1-1/4"	48	44	57	20	460
653542S	1-5/16"	50	44	57	20	479
653544S	1-3/8"	52	44	57	22	497
653546S	1-7/16"	54	44	57	22	529

653548S	1-1/2"	56	44	57	22	540
653550S	1-9/16"	58	44	58	22	567
653552S	1-5/8"	59	44	58	24	580
653554S	1-11/16"	62	44	58	24	636
653556S	1-3/4"	64	44	62	24	676
653558S	1-13/16"	66	44	62	24	717
653560S	1-7/8"	68	54	65	26	925
653562S	1-15/16"	70	54	65	26	955
653566S	2-1/16"	74	54	68	30	1078
653568S	2-1/8"	76	54	68	30	1122
653570S	2-3/16"	77	54	70	30	1151
653572S	2-1/4"	79	54	70	32	1208
653574S	2-5/16"	81	54	70	32	1245
653576S	2-3/8"	84	54	70	32	1349