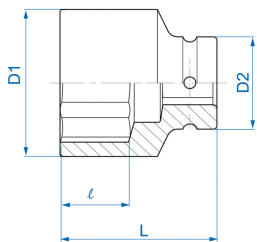



8535S



S 1" 6-Kant Kraft-Steckschlüsseinsatz, Zoll

ANSI / ASME B107.1

- Zoll
- Chrom-Molybdän, phosphatiert

	Abmessung (Zoll)	D1 (mm)	D2 (mm)	L (mm)	l (mm)	Gewicht (g)
853524S	3/4"	35	54	58	15	508
853526S	13/16"	37	54	58	15	529
853528S	7/8"	38	54	58	15	520
853530S	15/16"	41	54	58	17	529
853532S	1"	42	54	58	17	567
853534S	1-1/16"	44	54	58	19	538
853536S	1-1/8"	47	54	58	19	600
853540S	1-1/4"	51	54	62	20	679
853542S	1-5/16"	52	54	62	20	700
853544S	1-3/8"	54	54	62	20	779
853546S	1-7/16"	56	54	65	20	729
853548S	1-1/2"	58	54	65	22	742
853550S	1-9/16"	60	54	65	22	800

**KING TONY***Enjoy your work*

853552S	1-5/8"	61	54	70	22	846
853554S	1-11/16"	64	54	70	22	890
853556S	1-3/4"	67	54	70	26	1000
853558S	1-13/16"	68	54	75	26	1075
853560S	1-7/8"	70	54	75	26	1085
853562S	1-15/16"	72	54	75	26	1140
853564S	2"	74	54	75	30	1235
853566S	2-1/16"	75	54	80	30	1300
853568S	2-1/8"	78	54	80	30	1400
853570S	2-3/16"	79	54	83	32	1433
853572S	2-1/4"	82	54	83	32	1500
853574S	2-5/16"	83	54	83	32	1542
853576S	2-3/8"	86	54	87	32	1758
853578S	2-7/16"	88	54	87	34	1760
853580S	2-1/2"	90	54	87	34	1750
853582S	2-9/16"	92	54	90	34	1758
853584S	2-5/8"	94	54	90	34	1966
853586S	2-11/16"	95	54	90	34	1966
853588S	2-3/4"	97	54	93	34	2112
853590S	2-13/16"	99	86	93	36	2925
853592S	2-7/8"	102	86	93	36	3050
853594S	2-15/16"	104	86	95	36	3188
853596S	3"	106	86	95	36	3205
8535A0S	3-1/8"	110	86	95	43	3350
8535A4S	3-1/4"	112	86	95	43	3300
8535A8S	3-3/8"	117	86	100	43	3550
8535B2S	3-1/2"	122	86	100	43	3950