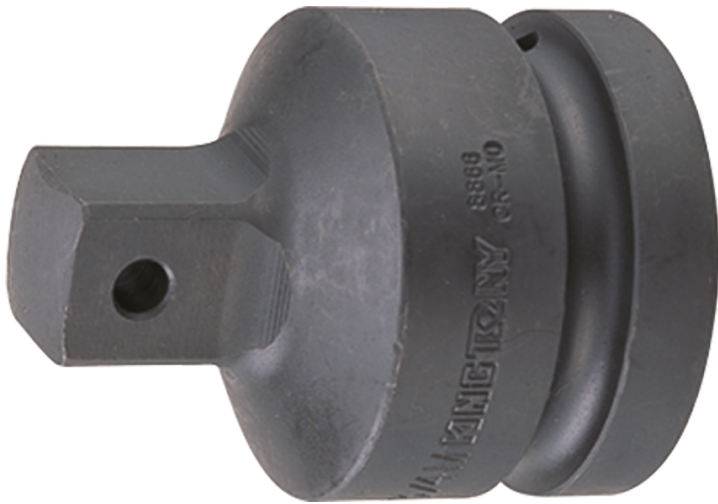



8866



Reduzierer 1" → 3/4"

DIN 3121

- 1" x 3/4"
- Für 3/4" Kraft-Steckschlüssel
- Max. Drehmoment: 1412 Nm
- Chrom-Molybdän
- Phosphatiert

	Eingangsvierkant (Input)	Ausgangsvierkant (Output)	Max. Drehmoment (Nm)	Gewicht (g)
8866	1"	3/4"	1412	562