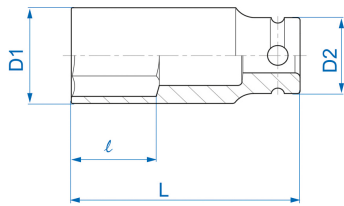



4435M



M Vaso de impacto hexagonal largo en métrico 1/2"

DIN 3121

- en métrico
- Cromo molibdeno
- Acabado fosfato

	Dimensión (mm)	D1 (mm)	D2 (mm)	L (mm)	l (mm)	Peso (g)
443508M	8	15	24.8	78	12	124
443509M	9	16.3	24.8	78	12	137
443510M	10	17.6	24.8	80	12	149
443511M	11	18.8	24.8	80	13	153
443512M	12	20	24.8	80	14	164
443513M	13	21.2	24.8	80	14	169
443514M	14	22.5	24.8	80	14	168
443515M	15	23.8	29.8	80	16	225
443516M	16	25	29.8	80	16	233
443517M	17	26.2	29.8	80	16	239
443518M	18	27.5	29.8	80	17	246
443519M	19	28.8	29.8	80	18	254
443520M	20	29	29.8	80	20	244

443521M	21	29.8	29.8	80	20	247
443522M	22	32.4	30	80	22	278
443523M	23	33.2	30	80	24	316
443524M	24	34.4	30	80	24	297
443525M	25	36	30	80	24	326
443526M	26	37	30	80	27	367
443527M	27	37.8	30	80	27	364
443528M	28	39.8	30	80	27	424
443529M	29	39.8	30	80	27	407
443530M	30	41.8	30.5	80	30	422
443532M	32	46	30	80	32	503
443533M	33	46	30	80	32	471
443534M	34	46	30	80	33	466
443536M	36	47	30	80	36	445
443538M	38	50	30	80	38	515
443541M	41	56	30	80	38	689
443546M	46	64	30	80	40	943