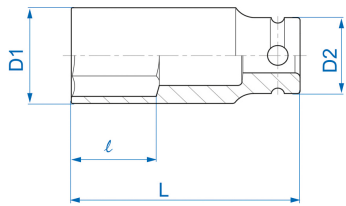



## 4430S



### **S** Vaso de impacto bi-hexagonal largo en pulgadas 1/2"

ANSI/ASME B107.2

- Pulgada
- Bi-hexagonal
- Cromo molibdenum
- Acabado fosfato

	Dimensión (Inch)	D1 (mm)	D2 (mm)	L (mm)	l (mm)	Peso (g)
443020S	5/8"	24	25	80	16	233
443024S	3/4"	28	30	80	16	250
443028S	7/8"	32	30	80	16	294
443030S	15/16"	34	30	80	16	308
443032S	1"	36	30	80	16	341
443034S	1-1/16"	38	30	80	16	358
443036S	1-1/8"	41	30	80	16	401
443040S	1-1/4"	46	30	80	16	504
443042S	1-5/16"	46	30	80	16	476
443048S	1-1/2"	50	30	80	34	564