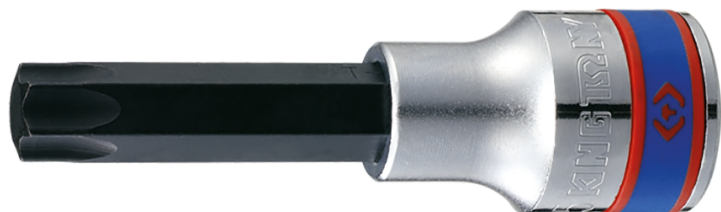


# 4033

## Douille tournevis TORX® 1/2"

DIN 3120



- Embout traitement S2
- Finition chromée polie

	Empreinte (N°)	L (mm)	Poids (g)
403320	T20	80	78
403325	T25	80	79
403327	T27	80	80
403330	T30	80	80
403340	T40	80	81
403345	T45	80	81
403350	T50	80	82
403355	T55	80	99
403360	T60	80	134
403370	T70	80	143