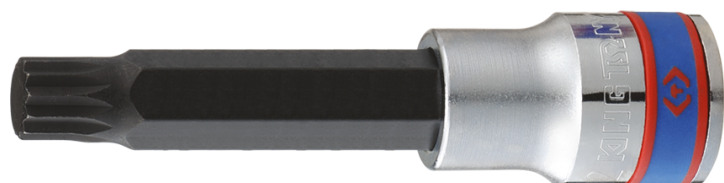



4036

Douille tournevis XZN® 1/2"

DIN 3120



- Embout traitement S2
- Finition chromée polie

	Empreinte (N°)	L (mm)	Poids (g)
403606	M6	80	75
403608	M 8	80	90
403610	M10	80	107
403612	M12	80	142
403614	M14	80	134
403605	M5	80	110