

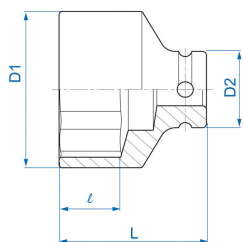
4535M




M Douille à chocs standard métrique 6 pans 1/2"

DIN 3129

- Métrique
- Chrome molybdenum
- Finition phosphatée



	Dimension (mm)	D1 (mm)	D2 (mm)	L (mm)	l (mm)	Poids (g)
453508M	8	14	25	38	7	67
453509M	9	15	25	38	7	67
453510M	10	17	25	38	8	70
453511M	11	18	25	38	8	71
453512M	12	19	25	38	9	72
453513M	13	20	25	38	10	72
453514M	14	22	25	38	10	77
453515M	15	23	30	38	11	112
453516M	16	24	30	38	11	112
453517M	17	26	30	38	12	115
453518M	18	27	30	38	13	115
453519M	19	28	30	38	13	120
453520M	20	29	30	38	13	120



KING TONY

Enjoy your work

453521M	21	30	30	40	14	125
453522M	22	32	30	40	14	143
453523M	23	33	30	40	15	143
453524M	24	34	30	42	15	152
453525M	25	36	30	42	15	168
453526M	26	37	30	42	15	173
453527M	27	38	30	44	16	176
453528M	28	41	30	44	16	194
453529M	29	41	30	44	17	194
453530M	30	42	30	44	17	201
453532M	32	44	30	44	18	205
453533M	33	44	30	46	18	227
453534M	34	45	30	46	18	231
453536M	36	47	30	46	19	248
453538M	38	50	30	50	20	241
453539M	39	51	30	50	21	240
453541M	41	52	30	52	21	283
453546M	46	59	30	55	23	408
453535M	35	46	30	46	20	227