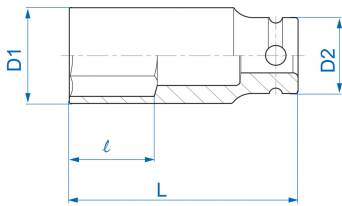



4935M



M Douille à chocs longue à paroi fine métrique 6 pans 1/2"

DIN 3121

- Métrique
- Chrome molybdenum
- Finition phosphatée

	Dimension (mm)	D1 (mm)	D2 (mm)	L (mm)	l (mm)	Poids (g)
493510M	10	15.5	25	80	20	132
493511M	11	16.7	25	80	20	151
493512M	12	18	25	80	20	148
493513M	13	19	25	80	20	148
493514M	14	20.5	25	80	20	156
493516M	16	23	30	80	20	213
493517M	17	24.5	30	80	23	230
493519M	19	27	30	80	23	238
493521M	21	29	30	80	25	234
493522M	22	30.5	30	80	25	294
493523M	23	32	30	80	26	300
493524M	24	33	30	80	26	285
493526M	26	35.5	30	80	27	341



KING TONY

Enjoy your work

493527M	27	37	30	80	27	358
493530M	30	40.5	30	80	27	413