

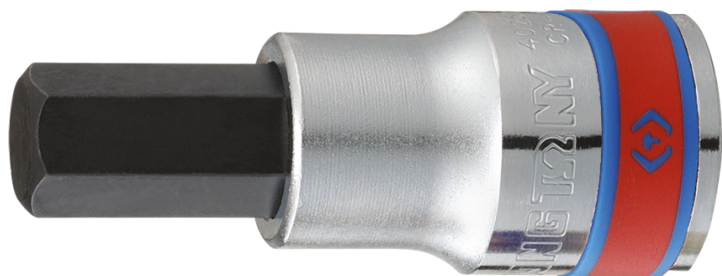
4025S


S

Douille tournevis 6 pans 1/2"

DIN 7422

- Embout traitement S2
- Finition chromée polie



	Longueur (mm)	Dimension (pouces)	Poids (g)
402512S	60	3/8"	81
402506S	3/16	60	66
402507S	7/32	60	68
402508S	1/4	60	69
402509S	9/32	60	70
402510S	5/16	60	74
402514S	7/16	60	100
402516S	1/2	60	110
402518S	9/16	60	157
402520S	5/8	66	162
402524S	3/4	66	225