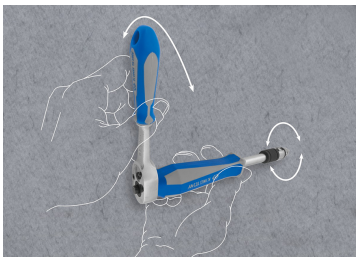
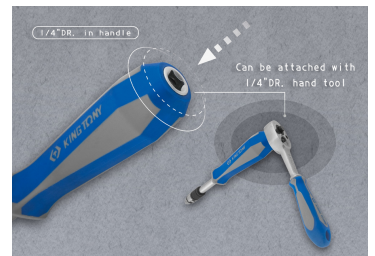



## 2176DF

### Poignée tournevis emmanchée 1/4"

NF ISO 3315, ISO 3315, DIN 3122, ASME B107.10

- Conception 2 en 1 : poignée tournevis emmanchée + porte-embout
- Manche bi-matière (PP+TPR)



	Longueur (mm)	Carré conducteur	L (pouces)	Poids (g)
2176DF	150	1/4"	6"	105