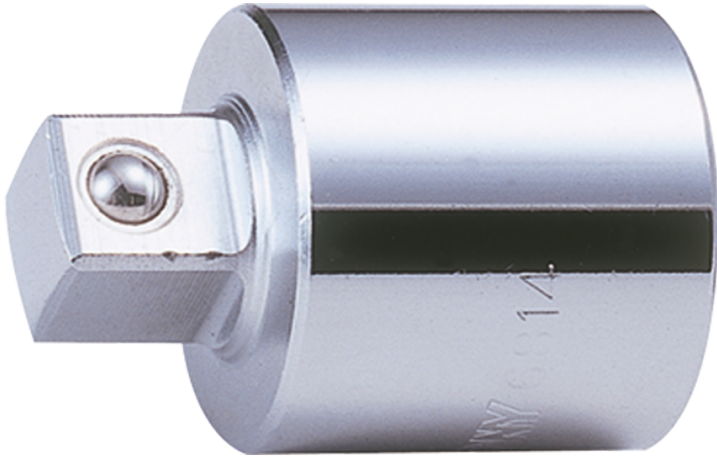


# 3812



## 3/8" → 1/4" Reducer adapter

DIN 3123, ISO 3316

- 3/8" x 1/4"
- For use with 1/4" socket
- Max torque : 62 Nm
- Polished and chrome plated finish

KING TONY	Square drive (Input)	Square drive (Output)	Weight (g)
3812	3/8"	1/4"	30