

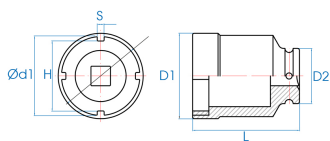
# 44K9


**M**

## 1/2" locknut socket



- Sockets for SKF - TMFS Series locknuts
- Easier passage around the bearing compared to a hook wrench
- The SKF TMFS model is suitable for KM, KMK (metric) and KMF series
- Chrome Vanadium steel
- Phosphate finish



	Size (mm)	N° Tip	D1 (mm)	H (mm)	S (mm)	D2 (mm)	ød1 (mm)	L (mm)	Weight (g)
44K928M	28	TMFS 3	36	24.4	3.8	30	30	90	382
44K932M	32	TMFS 4	38	28.4	3.8	30	34	90	378
44K938M	38	TMFS 5	46	34.4	4.8	30	40	90	559