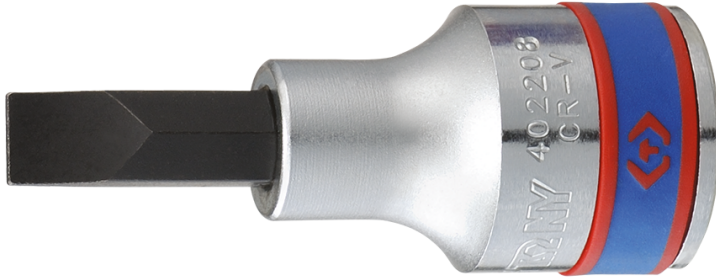



4022

1/2" Slotted bit socket

DIN 5264/3120



- Alloy steel S2
- Polished and chrome plated finish

	Tip width (mm)	Tip thickness (mm)	L (mm)	Weight (g)
402208	8	1.2	60	77
402210	10	1.6	60	83
402212	12	2.0	60	110
402214	14	2.5	60	112
402216	16	2.5	60	113