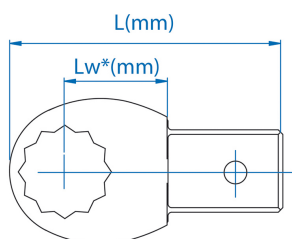
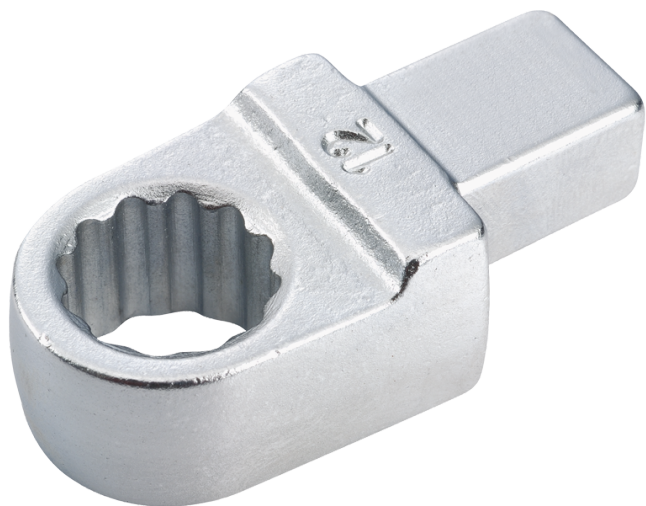



345021S

S Inch Ring Wrench Insert (9 x 12 mm)

- Polished chrome plated finish



|  | Dimension (Inch) | End fitting | Lw (mm) | l (mm) | Weight (g) |
|-------------------------------------------------------------------------------------|------------------|-------------|---------|--------|------------|
| 34502108S | 1/4" | 9x12 | 17.5 | 40.6 | 36.9 |
| 34502110S | 5/16" | 9x12 | 17.5 | 42.1 | 39.4 |
| 34502112S | 3/8" | 9x12 | 17.5 | 42.8 | 42 |
| 34502114S | 7/16" | 9x12 | 17.5 | 43.8 | 51.3 |
| 34502116S | 1/2" | 9x12 | 17.5 | 45 | 52.9 |
| 34502118S | 9/16" | 9x12 | 17.5 | 46.5 | 56.2 |
| 34502120S | 5/8" | 9x12 | 17.5 | 47 | 55.3 |
| 34502122S | 11/16" | 9x12 | 17.5 | 48.8 | 63.4 |
| 34502124S | 3/4" | 9x12 | 17.5 | 50 | 68.2 |
| 34502126S | 13/16" | 9x12 | 17.55 | 50.75 | 37 |
| 34502128S | 7/8" | 9x12 | 18 | 51.45 | 37 |