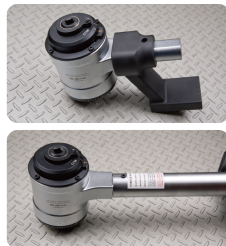
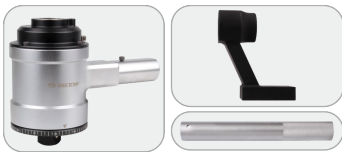



3448826



26:1 torque multiplier

- Input torque multiplied by 26 at output
- Accuracy at $\pm 5\%$ in relation to the torque applied
- With an anti-backlash device
- With rotary angle gauge
- 2 types of reaction bar (straight and bent) for maximum versatility.
- Thanks to its high ratio, there is no need to use heavy and cumbersome tools (such as long lever arms and high capacity torque w
- Practical, delivered in a plastic carry case for use outside the workshop
- CAUTION: manual use only. Do not use the torque multiplier with a pneumatic tool.
- No maintenance required and offers an extended life



	Ratio	Square drive (Input)	Square drive (Output)	Max Torque (Input Nm/lbf.ft)	Max Torque (Output Nm/lbf.ft)	Weight (kg)
3448826	26:1	1/2"	1"	173/130	4500/3000	8.9