

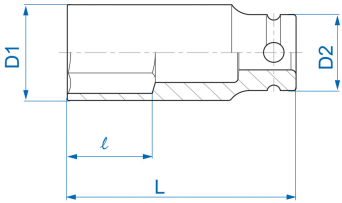
4435S




S 1/2" long imperial 6 points impact socket

ANSI / ASME B107.2

- Inch
- Chrome molybdenum
- Phosphate finish



|  | Dimension (Inch) | D1 (mm) | D2 (mm) | L (mm) | l (mm) | Weight (g) |
|--|------------------|---------|---------|--------|--------|------------|
| 443510S | 5/16" | 14 | 25 | 78 | 12 | 123 |
| 443512S | 3/8" | 17 | 25 | 80 | 12 | 148 |
| 443514S | 7/16" | 18 | 25 | 80 | 13 | 148 |
| 443516S | 1/2" | 20 | 25 | 80 | 14 | 159 |
| 443518S | 9/16" | 22 | 25 | 80 | 14 | 170 |
| 443520S | 5/8" | 24 | 25 | 80 | 16 | 232 |
| 443522S | 11/16" | 26 | 30 | 80 | 17 | 235 |
| 443524S | 3/4" | 28 | 30 | 80 | 20 | 251 |
| 443526S | 13/16" | 30 | 30 | 80 | 22 | 243 |
| 443528S | 7/8" | 32 | 30 | 80 | 22 | 292 |
| 443530S | 15/16" | 34 | 30 | 80 | 24 | 308 |
| 443532S | 1" | 36 | 30 | 80 | 24 | 336 |
| 443534S | 1-1/16" | 38 | 30 | 80 | 27 | 356 |



KING TONY

Enjoy your work

| | | | | | | |
|---------|---------|----|------|----|----|-----|
| 443536S | 1-1/8" | 41 | 30 | 80 | 27 | 401 |
| 443538S | 1-3/16" | 42 | 30,5 | 80 | 30 | 409 |
| 443540S | 1-1/4" | 44 | 30 | 80 | 32 | 423 |
| 443542S | 1-5/16" | 46 | 30 | 80 | 34 | 476 |