

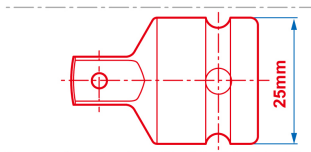
## 4873P




### 1/2" → 3/8" Reducer adapter (ø 25 mm)

DIN 3121

- 1/2" x 3/8"
- Security ball
- For use with 3/8" impact socket
- Max torque: 202 Nm
- Chromium molybdenum
- Phosphate finish



	Square drive (Input)	Square drive (Output)	ø (mm)	Max torque (Nm)	Weight (g)
4873P	1/2"	3/8"	25	202	80