

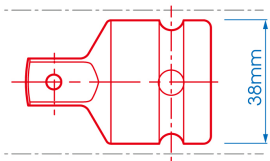
6874P




3/4" → 1/2" Reducer adapter (ø 38 mm)

DIN 3121

- 3/4" x 1/2"
- Security ball
- For use with 1/2" impact sockets
- Max torque: 512 Nm
- Chromium molybdenum
- Phosphate finish



	Square drive (Input)	Square drive (Output)	ø (mm)	Max torque (Nm)	Weight (g)
6874P	3/4"	1/2"	38	512	255