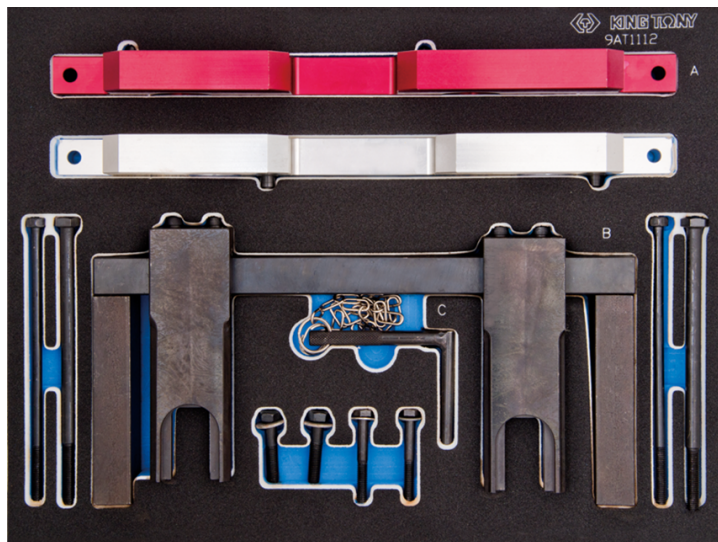
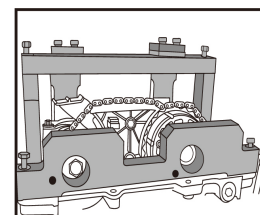
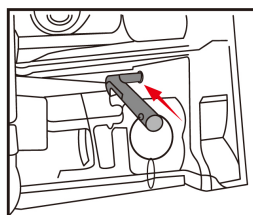
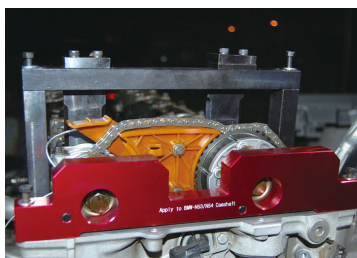
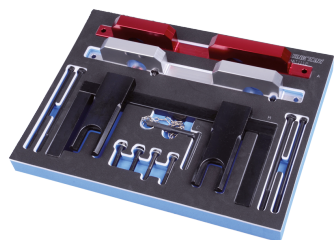


9AT1112E



Twin Camshaft Petrol Engine Timing Tool Set BMW

- This kit contains a camshaft locking tool, a VANOS alignment plate and a flywheel locking pin
- #9
- Works with BMW 2.5 and 3L belt, 6-cylinder twin camshaft 16v engines
- This kit is used to lock the camshaft in TDC position, when performing the timing of the engine



9AT1112E

BMW Model

128i. E82 (07-08) 130i. E81/87 (05-08)
135iS. E82 (07-08) 323i. E90/91/92/93
(04-08) 325i/xi. E90/91/92/93 (04-08)
328i/xi. E90/91/92/93 (04-08) 330i/xi.
E90/91/92/93 (04-08) 335i/xi.
E90/91/92/93 (05-08) 523i/Li. E60/61
(04-08) 525i/Li/xi. E60/61 (04-08)

BMW Engine

N51 / N52 /N52K (Valvetronic) N53 /
N54 (injection direct)