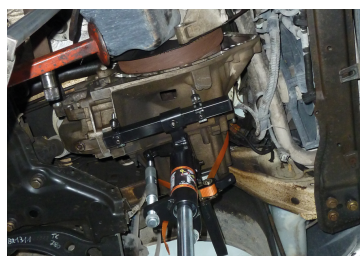
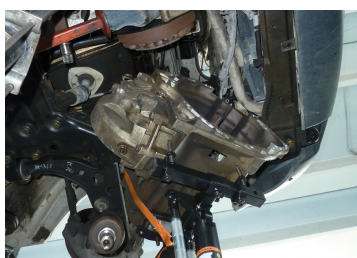
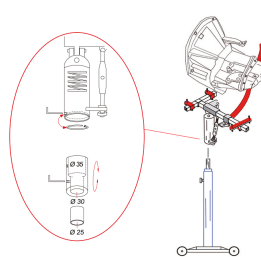



9TYVS1



Support saddle

- Designed to facilitate the dismantling and positioning of the gearbox on cars and light commercial vehicles.
- An also be used as a support for removing and positioning engine components, in a safe way for the operator.
- Recommended for working on heavy or bulky components located under the vehicle, such as fuel tanks, transmission shafts, engine cradles, exhaust pipes and differentials.



	Capacity (kg)	Length (mm)	Height (mm)	Width (mm)	Cylinder adapter (mm)	Ratchet clamp (mm)	Weight (kg)
9TYVS1	150	450	300	310	ø 25, ø 30 , ø 35	25 x 130	8

