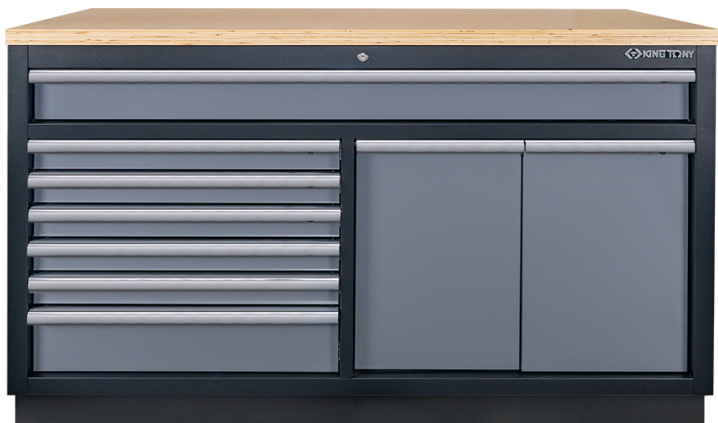


## 87D1123AKG

### Floor unit 9 drawers



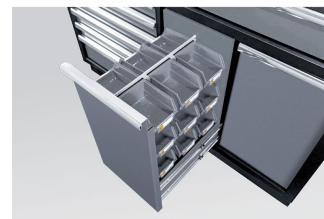
- Content with garage bin & storage box\*18 PC.
- Safety mechanism with the drawers.
- Central locking.
- Drawers on ball bearing slides.
- Drawers are compatible with all King Tony EVAWAVE trays.
- Grey front, glossy finish.
- Black casing, matte finish.
- Wooden Board included.
- Drawer load: 1272x84mm = 80kg, 783x58mm = 30kg, 783x137mm = 35kg
- Maximum load weight 350 kg.



Safety mechanism




Garage bin



Storage box



	Dimensions W x D x H (mm)	Drawer Size W x D x H (mm)	Loading weight (kg)	Weight (kg)
87D1123AKG	1360 x 460 x 948	1272 x 403 x 84 (1), 783 x 403 x 58 (5), 783 x 403 x 137 (1)	350	112