

## 87D1123AKB

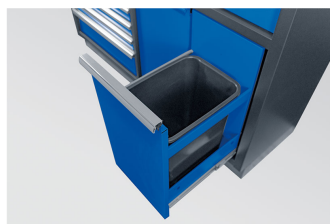
### Floor unit 9 drawers



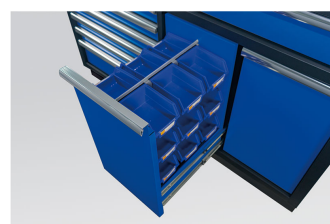
- Content with garage bin & storage box\*18 PC.
- Safety mechanism with the drawers.
- Central locking.
- Drawers on ball bearing slides.
- Drawers are compatible with all King Tony EVAWAVE trays.
- Blue front, glossy finish.
- Black casing, matte finish.
- Wooden Board included.
- Drawer load: 1272x84mm = 80kg, 783x58mm = 30kg, 783x137mm = 35kg
- Maximum load weight 350 kg.



Safety mechanism



Garage bin



Storage box



Dimensions W x D x H  
(mm)

Drawer Size W x D x H  
(mm)

Loading weight (kg)

Weight (kg)

87D1123AKB

1360 x 460 x 948

1272 x 403 x 84 (1),  
783 x 403 x 58 (5), 783  
x 403 x 137 (1)

350

112