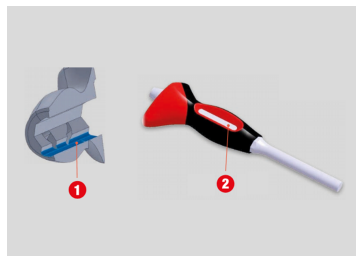



7661

Sheathed pin punch with anti-vibration handle



- Patented non-slip bi-material handle for a comfortable use.
- Handle fits perfectly in hand offering an excellent grip for a safer and more comfortable use.
- The dampening band inside the handle reduces choc wave on blade. (picture 1)
- Non-slip and dampening notch on the handle allows to firmly grip and hold tools in place for a safer use. (picture 2)
- Made of chrome-vanadium (Cr-V) steel..
- Brownish finish.



	Length (mm)	ø (mm)	Weight (g)
7661029	290	10	450
7661229	290	12	480
7661429	290	14	530
7661629	290	16	582
7661829	290	18	646