

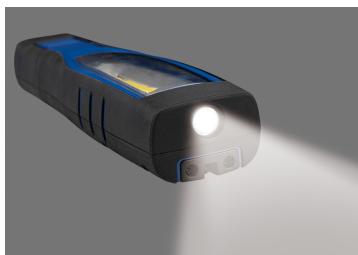
## 9TA242AA




### 7W COB + 4W SMD Inspection Lamp (200 & 700 lm)

CE, RoHS  
IP65, IK07

- 7W COB (Main light) + 4W LED (Top light)
- Switch Mode: Top light - Main light - OFF
- 180°magnetic swivel base + two 360°functional hooks, two magnets in the back
- Rechargeable battery : 3.7V - 2600mAh Li-ion battery
- Accessories : 5V 1.0A USB charger + USB-C charging cable
- 8 hours of continuous light
- Charging time : 4 hours
- Color temperature: 6500 kelvin (white light)



|  | Brightness (lm)                | Color temperature (kelvin) | Length (mm) | USB (input) | Charging time (hours) | Battery life (hours) | Weight (g) |
|--|--------------------------------|----------------------------|-------------|-------------|-----------------------|----------------------|------------|
| 9TA242AA   | COB: 150 / 350 / 700, SMD: 200 | 6500                       | 260         | USB-C       | 4                     | 2 ~ 8                | 396        |