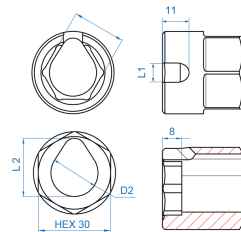



## 9AJA0



### Extra-short lambda sensor socket

- Extra-short socket to access difficult to reach areas.
- Equipped with a slot for the connection leads.
- 30 mm six pans base can be used with a combination wrench or with a socket.
- Temperature, NOX and particles sensor socket.



	Size (mm)	D2 (mm)	L1 (mm)	L2 (mm)	Compatible with	Weight (g)
9AJA020	20	18	8	22	Temperature sensor.	132
9AJA022	22	19.5	8	24	NOX sensor.	118
9AJA024	24	19.5	10	24	Particles sensor.	112