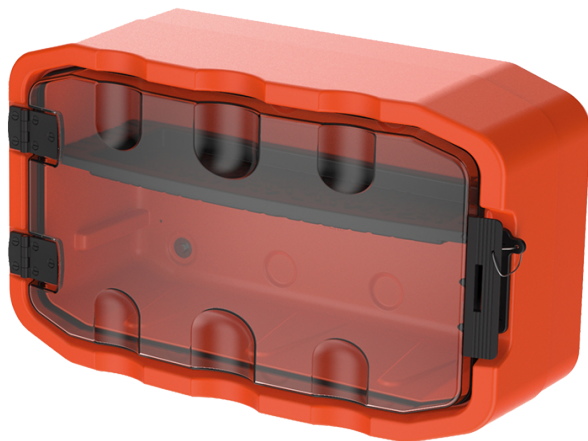


PS2PM



Wall-mounted rescue kit box

IP54

- Designed to stock rescue kit for intervention to rescue a victim in the event of an incident on or near a low voltage electrical installation.
- Indoor or outdoor use.
- UV-resistant transparent door with locking handle that can accommodate a seal or padlock (max. Ø 4.8 mm shackle).
- Equipment mounting insert optimized for efficient storage and quick response.
- Quick access wall-mounted rescue kit for intervention to rescue a victim in the event of an incident on or near a low voltage electrical installation.
- Weatherproof plastic case, resistant to weather, dust, splashes and marine spray (IP54).
- Lockable case to prevent the borrowing of material.
- Wall mounting kit included.
- Empty box, delivered without components, poster nor tray.



PS2PM

Dimensions W x D x H (mm)

790 x 280 x 400