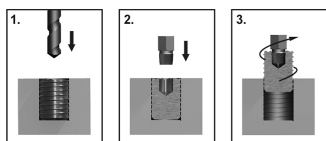



11015SQM


M

Metric screw extractor

- For removing damaged, broken, or jammed screws.
- For removing rounded, damaged, broken, or jammed bolts.
- SNCM + V steel
- Hardness : HRC 49-52
- Do not ever use these hand extractors with a powertool, to avoid risks of damage or injury.
- Operation :
 - 1. Drill a hole, 0.5 mm bigger than the extractor, on the bolt.
 - 2. Insert the extractor inside the bolt.
 - 3. Turn counter-clockwise to remove the bolt.



	Length (mm)	Size tip (mm)	Hex drive
11015SQ12M03	29	3	12
11015SQ12M04	29	4	12
11015SQ12M05	29	5	12
11015SQ12M55	29	5.5	12
11015SQ12M06	29	6	12
11015SQ12M08	29	8	12
11015SQ12M10	29	10	12
11015SQ16M11	29	11	16
11015SQ16M12	29	12	16
11015SQ16M14	29	14	16