

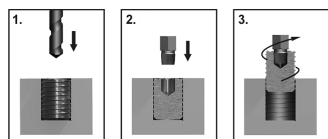
## 11015SQS




**S**

### Inch screw extractor

- For removing damaged, broken, or jammed screws.
- For removing rounded, damaged, broken, or jammed bolts.
- SNCM + V steel
- Hardness : HRC 49-52
- Do not ever use these hand extractors with a powertool, to avoid risks of damage or injury.
- Operation :
  - 1. Drill a hole, 0.5 mm bigger than the extractor, on the bolt.
  - 2. Insert the extractor inside the bolt.
  - 3. Turn counter-clockwise to remove the bolt.



	Length (mm)	Size tip (Inch)	Hex drive
11015SQ12S04	29	1/8"	12
11015SQ12S06	29	3/16"	12
11015SQ12S08	29	1/4"	12
11015SQ12S12	29	3/8"	12
11015SQ16S16	29	1/2"	16