

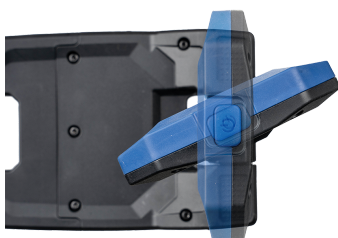
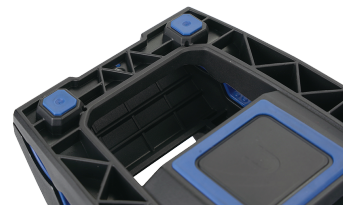
9TA471A




16W COB Flood light (1600 lm)

IP65, IK07

- Color temperature: 6500 kelvin (white light).
- Can be magnetically attached to metal objects.
- The special design of the clamp means it can be attached to a variety of objects and in a variety of environments.
- 300° rotation + 270° vertical rotation.
- Magnetic non-slip base.
- Accessories: USB-C charging cable.
- Can be placed securely on a table or worktop.
- Li-ion rechargeable battery 3.7 V, 5200 mAh
- 3 LED battery level and charging indicator.





	Dimensions W x D x H (mm)	Brightness (lm)	Color temperature (kelvin)	Temperature range (°C)	USB (input)	Charging time (hours)	Battery life (hours)	Weight (g)
9TA471A	176 x 105 x 95	100 / 300 / 700 / 1600	6500	-20°C ~ +40°C	USB-C	5	3 ~ 24	625