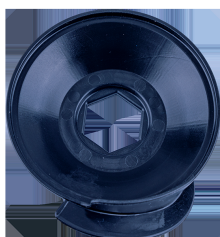



## 9AL31



### PSA Belt mounting tool

- Designed for installation of expandable belt on water pumps.
- Nylon fiber material prevents from damaging components during use.
- Compatible with PSA Group vehicles and Vauxhall/Opel 1.0 L and 1.2 L 3-cylinder engines manufactured since 2012.



	Hex drive	Square drive	ø (mm)	CITROEN/PEUGEOT model	VAUXHALL/OPEL Model	Weight (g)
9AL31	18		69	Citroën : Berlingo, C1, C3, C3 Picasso, C3 Aircross, C4, C4 Picasso, C4 Cactus, C- Elysee, DS3, DS4, DS4S and DS5LS. Peugeot : 108, 208, 301, 308, 408, 2008, 3008, 5008 Partner.	Crossland X.	60