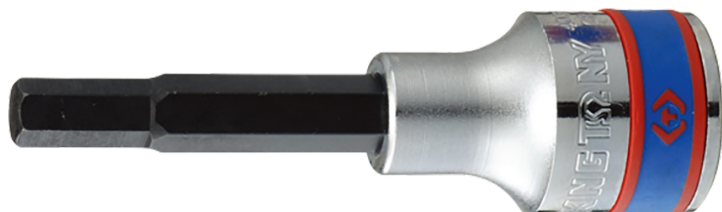



4035

M Chiave a bussola a giravite esagonale
 1/2"

DIN 7422/3120



- Ghiera trattamento S2
- Finizione cromata lucidata

	Dimensioni (mm)	L (mm)	Peso (g)
403504	H4	80	74
403505	H5	80	75
403506	H6	80	77
403507	H7	80	77
403508	H8	80	80
403510	H10	80	107
403512	H12	80	145
403514	H14	80	145
403517	H17	80	200
403519	H19	80	245
403511	H11	80	140
403509	H9	80	91