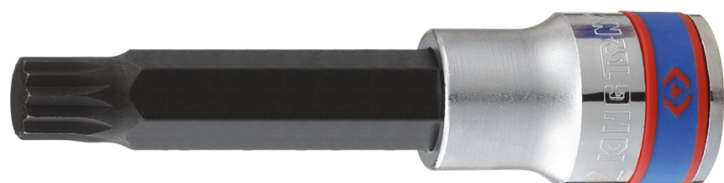



4036

## Chiave a bussola a giravite XZN® 1/2"

DIN 3120



- Ghiera trattamento S2
- Finizione cromata lucidata

|  | Impronta N° | L (mm) | Peso (g) |
|---|-------------|--------|----------|
| 403606  | M6          | 80     | 75       |
| 403608  | M 8         | 80     | 90       |
| 403610  | M10         | 80     | 107      |
| 403612  | M12         | 80     | 142      |
| 403614  | M14         | 80     | 134      |
| 403605  | M5          | 80     | 110      |