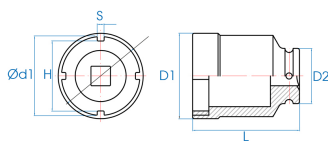



64K9M



M Chiave a bussola per dadi ad intacche 3/4"

- Sockets for SKF - TMFS Series locknuts
- Easier passage around the bearing compared to a hook wrench
- The SKF TMFS model is suitable for KM, KMK (metric) and KMF series
- Cromo Vanadio
- Finizione fosfatata

	Dimensioni (mm)	Impronta N°	D1 (mm)	H (mm)	S (mm)	D2 (mm)	ød1 (mm)	L (mm)	Peso (g)
64K975M	75	TMFS 11	83	69.4	6.8	54	77	105	1600