

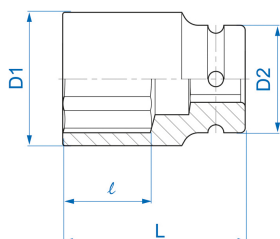
8435M




M Chiave a bussola ad impatto lunga metrica esagonale

DIN 3121

- Metrico
- Cromo molibdeno. Finizione fosfato



	Dimensioni (mm)	D1 (mm)	D2 (mm)	L (mm)	l (mm)	Peso (g)
843524M	24	41	54	90	25	850
843527M	27	44	54	90	25	879
843528M	28	45	54	90	25	892
843530M	30	48	54	90	28	916
843532M	32	51	54	90	28	979
843533M	33	52	54	92	28	1016
843534M	34	53	54	92	28	1029
843535M	35	54	54	92	28	1016
843536M	36	56	54	92	32	1033
843538M	38	58	54	92	32	1025
843540M	40	60	54	92	32	1075
843541M	41	61	54	92	32	1083
843542M	42	64	54	92	32	1100



KING TONY

Enjoy your work

843546M	46	68	54	95	35	1137
843548M	48	70	54	95	35	1400
843550M	50	73	54	95	35	1518
843552M	52	75	54	100	40	1637
843554M	54	78	54	100	40	1750
843555M	55	79	54	100	40	1862
843558M	58	83	54	100	42	1925
843560M	60	86	54	100	42	2050
843570M	70	97	54	110	59	2921
843565M	65	92	54	110	50	2133