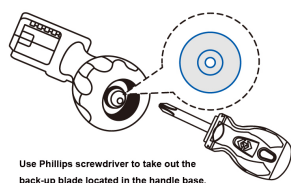
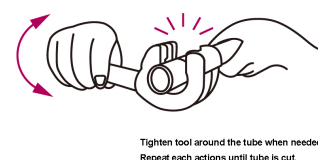
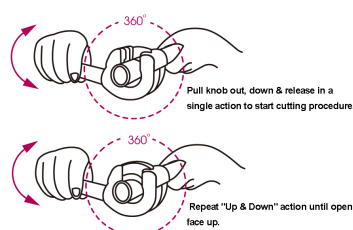
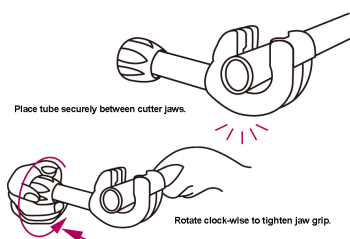
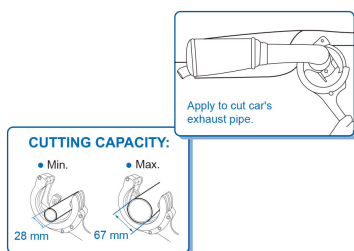


791223



Tagliatubi a cricchetto azione della ganascia a 360° (28~67mm)

- Comodo per tagliare i tubi di scarico
- Cuts without having to rotate tool completely around tubing
- Ratchet mechanism allows for tight area operation
- Cuts through some of the toughest surfaces: stainless steel, wall conduit, copper and aluminum
- Exclusive one hand operation, limited risks of hand-fatigue and injuries
- Comes with spare blade
- Use standard hex key to remove back-up blade located in the handle base
- 1. Place tube securely between cutter jaws
- 2. Rotate clock-wise to tighten jaw grip
- 3. Pull knob out, down & release in a single action to start cutting procedure
- 4. Repeat "Up & Down" action until open face up
- 5. Tighten tool around the tube when needed. Repeat each actions until tube is cut
- Zinc alloy steel
- Nylon + fiber, TPE



791223

Capacità (mm)

28~67

Capacità di taglio Acciaio
Inox (mm)

2

Peso (g)

1122.6