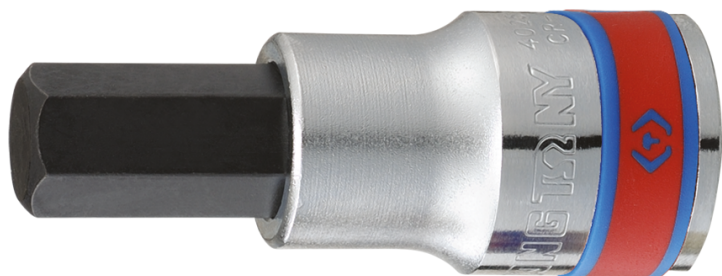



4025S

S Chiave a bussola a giravite esagonale 1/2"

DIN 7422

- Ghiera trattamento S2
- Finizione cromata lucidata



	Lunghezza (mm)	Dimensione (Inch)	Peso (g)
402512S	60	3/8"	81
402506S	3/16	60	66
402507S	7/32	60	68
402508S	1/4	60	69
402509S	9/32	60	70
402510S	5/16	60	74
402514S	7/16	60	100
402516S	1/2	60	110
402518S	9/16	60	157
402520S	5/8	66	162
402524S	3/4	66	225