

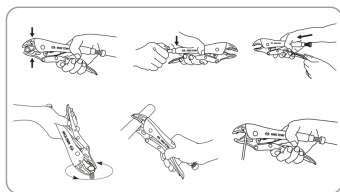
6011


Pinza autobloccante

ASME B107.500-2010



- Ganascia fine tipo serra-tubi.
- Regolazione mediante vite posteriore.
- Spela-fili integrato.
- Finizione al Nichel.



	L (mm)	L (inch)	Apertura max (mm)	Peso (g)
601110	254	10	48	542
601107	185	7	38	352