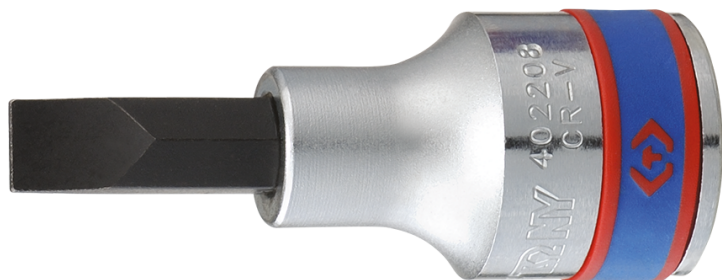



4022

Schroevendraaierdopsleutel met sleuf 1/2"

DIN 5264/3120



- S2-behandeld opzetstuk
- Afwerking in gepolijst chroom

	Tip breedte (mm)	Tip dikte (mm)	L (mm)	Gewicht (g)
402208	8	1.2	60	77
402210	10	1.6	60	83
402212	12	2.0	60	110
402214	14	2.5	60	112
402216	16	2.5	60	113