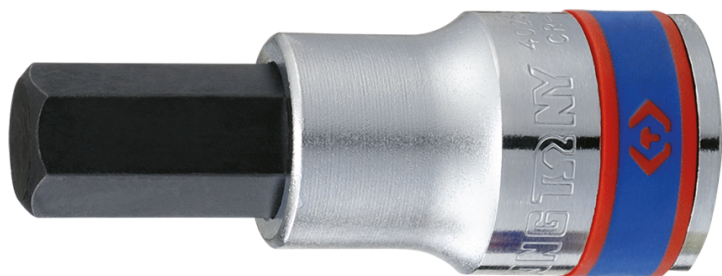



4025

M Inbusschroevendraaierdopsleutel
6-kantig 1/2"

DIN 7422/3120

- S2-behandeld opzetstuk
- Afwerking in gepolijst chroom



	Afmeting (mm)	L (mm)	Gewicht (g)
402503	H3	60	68
402504	H4	60	68
402505	H5	60	70
402506	H6	60	72
402507	H7	60	75
402508	H8	60	75
402510	H10	60	85
402512	H12	60	117
402514	H14	60	120
402517	H17	66	153
402519	H19	66	185
402511	H11	60	95