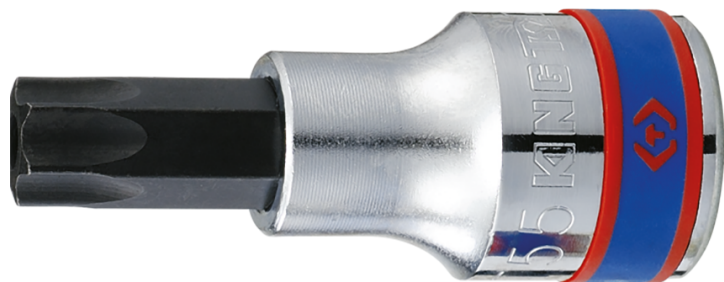



4027

RESISTORX®-schroevendraaierdopsleutel 1/2"

DIN 3120



- S2-behandeld opzetstuk
- Afwerking in gepolijst chroom

	Tip N°	L (mm)	Gewicht (g)
402720	T20	60	72
402725	T25	60	72
402727	T27	60	72
402730	T30	60	75
402740	T40	60	75
402745	T45	60	80
402750	T50	60	82
402755	T55	60	85
402760	T60	60	115