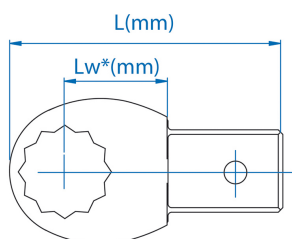
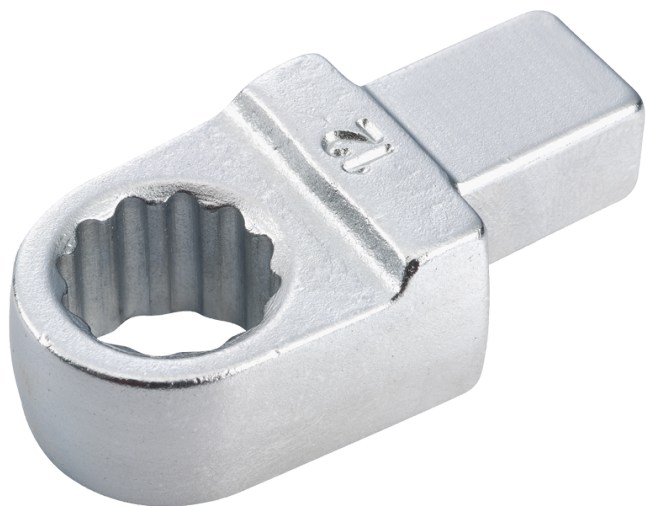


## 345021M

### **M** Metric Ring Wrench Insert (9 x 12 mm)

- Acabamento em cromo polido



	Dimensão (mm)	Fixação de extremidade	Lw (mm)	l (mm)	Peso (g)
34502107M	7	9x12	17.5	40	37.4
34502108M	8	9x12	17.5	40.6	36.9
34502110M	10	9x12	17.5	42.1	39.4
34502111M	11	9x12	17.5	42.8	42
34502112M	12	9x12	17.5	43.5	51.1
34502113M	13	9x12	17.5	43.8	51.3
34502114M	14	9x12	17.5	45	52.9
34502115M	15	9x12	17.5	45.5	53.6
34502116M	16	9x12	17.5	46.5	56.2
34502117M	17	9x12	17.5	47	55.3
34502118M	18	9x12	17.5	47.8	60
34502119M	19	9x12	17.5	48.8	63.4
34502121M	21	9x12	17.5	50	68.2



**KING TONY**

*Enjoy your work*

34502122M

22

9x12

17.5

50.8

70.6