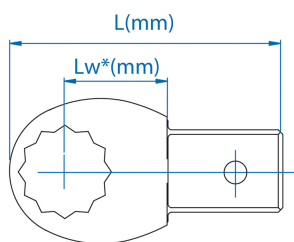
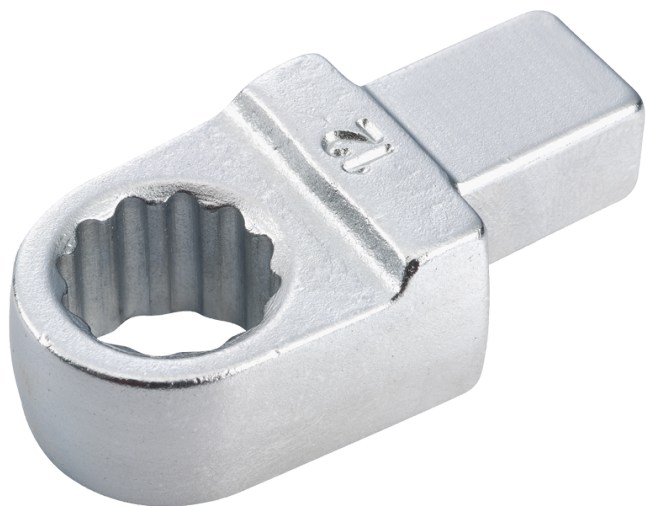



345021S

S Inch Ring Wrench Insert (9 x 12 mm)

- Acabamento em cromo polido



	Dimensões (polegadas)	Fixação de extremidade	Lw (mm)	l (mm)	Peso (g)
34502108S	1/4"	9x12	17.5	40.6	36.9
34502110S	5/16"	9x12	17.5	42.1	39.4
34502112S	3/8"	9x12	17.5	42.8	42
34502114S	7/16"	9x12	17.5	43.8	51.3
34502116S	1/2"	9x12	17.5	45	52.9
34502118S	9/16"	9x12	17.5	46.5	56.2
34502120S	5/8"	9x12	17.5	47	55.3
34502122S	11/16"	9x12	17.5	48.8	63.4
34502124S	3/4"	9x12	17.5	50	68.2
34502126S	13/16"	9x12	17.55	50.75	37
34502128S	7/8"	9x12	18	51.45	37