

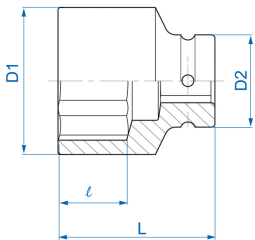
## 8535M




**M** 1" Standard metric 6 points impact socket

DIN 3129

- em métrico
- Cromo molibdênio



	Dimensão (mm)	D1 (mm)	D2 (mm)	L (mm)	l (mm)	Peso (g)
853519M	19	35	54	58	15	508
853521M	21	37	54	58	15	529
853522M	22	38	54	58	15	520
853523M	23	39	54	58	17	542
853524M	24	41	54	58	17	529
853525M	25	42	54	58	17	567
853526M	26	43	54	58	19	558
853527M	27	44	54	58	19	538
853528M	28	45	54	58	19	538
853529M	29	47	54	58	19	600
853530M	30	48	54	60	20	592
853532M	32	51	54	62	20	679
853533M	33	52	54	62	20	700

**KING TONY***Enjoy your work*

853534M	34	53	54	62	20	766
853535M	35	54	54	62	20	779
853536M	36	56	54	65	20	729
853538M	38	58	54	65	22	742
853540M	40	60	54	65	22	800
853541M	41	61	54	70	22	846
853542M	42	64	54	70	22	890
853544M	44	67	54	70	26	1000
853546M	46	68	54	75	26	1075
853548M	48	70	54	75	26	1085
853550M	50	73	54	75	26	1170
853552M	52	75	54	80	30	1300
853553M	53	76	54	80	30	1300
853554M	54	78	54	80	30	1400
853555M	55	79	54	83	32	1433
853558M	58	83	54	83	32	1542
853560M	60	86	54	87	32	1758
853563M	63	90	54	87	34	1750
853565M	65	92	54	90	34	1758
853566M	66	94	54	90	34	1966
853568M	68	95	54	90	34	1966
853570M	70	97	54	93	34	2112
853571M	71	99	86	93	36	2925
853575M	75	104	86	95	36	3188
853580M	80	110	86	95	43	3350
853585M	85	115	86	95	43	3250
853590M	90	122	86	100	43	3950
8535A0M	100	136	95	105	51	4600
853595M	95	130	95	105	52	4924