

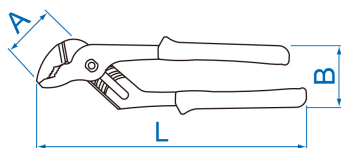
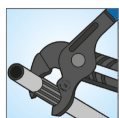
6511C


Alicate standard

DIN ISO 8976



- 7 posições de abertura
- Aço forjado
- Dentado espesso
- Cabo em PVC
- Acabamento em fosfato



	A (mm)	B (mm)	L (mm)	C (polegadas)	Abertura máx (mm)	Peso (g)
651110C	33	50	253	10"	50	400
651113C	43	50	325	13"	65	808
651117C	58	55	425	17"	100	1150