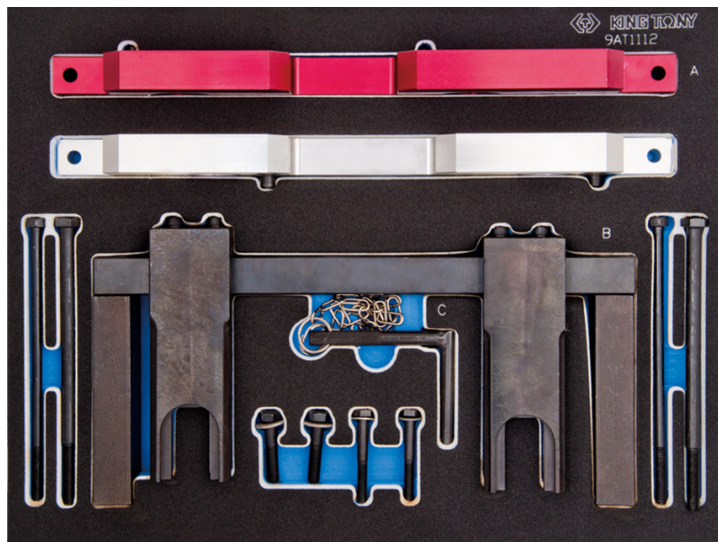
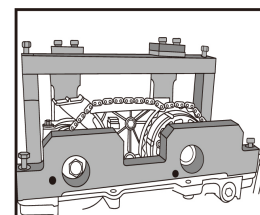
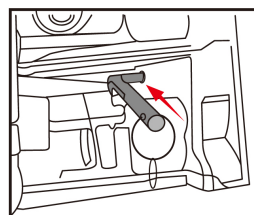
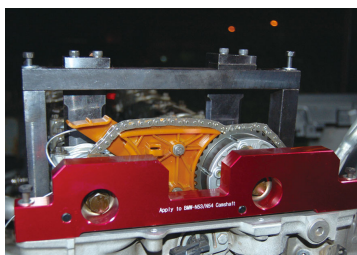
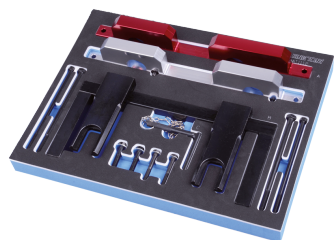


9AT1112E



Kit de calado motor gasolina dupla árvore de cames BMW

- Este kit inclui a ferramenta de regulação da árvore de cames, a placa de alinhamento e um pino de bloqueio de volante motor.
- #9
- Compatível com motores BMW 2.5 e 3L de corrente 6 cilindros, dupla árvore de cames 16v
- Este kit é recomendado para bloquear o árvore de cames ao ponto morto superior, durante a operação de regulação do motor



9AT1112E

Modelo BMW

128i. E82 (07-08) 130i. E81/87 (05-08)
135iS. E82 (07-08) 323i. E90/91/92/93
(04-08) 325i/xi. E90/91/92/93 (04-08)
328i/xi. E90/91/92/93 (04-08) 330i/xi.
E90/91/92/93 (04-08) 335i/xi.
E90/91/92/93 (05-08) 523i/Li. E60/61
(04-08) 525i/Li/xi. E60/61 (04-08)

Motor BMW

N51 / N52 /N52K (Valvetronic) N53 /
N54 (injection direct)